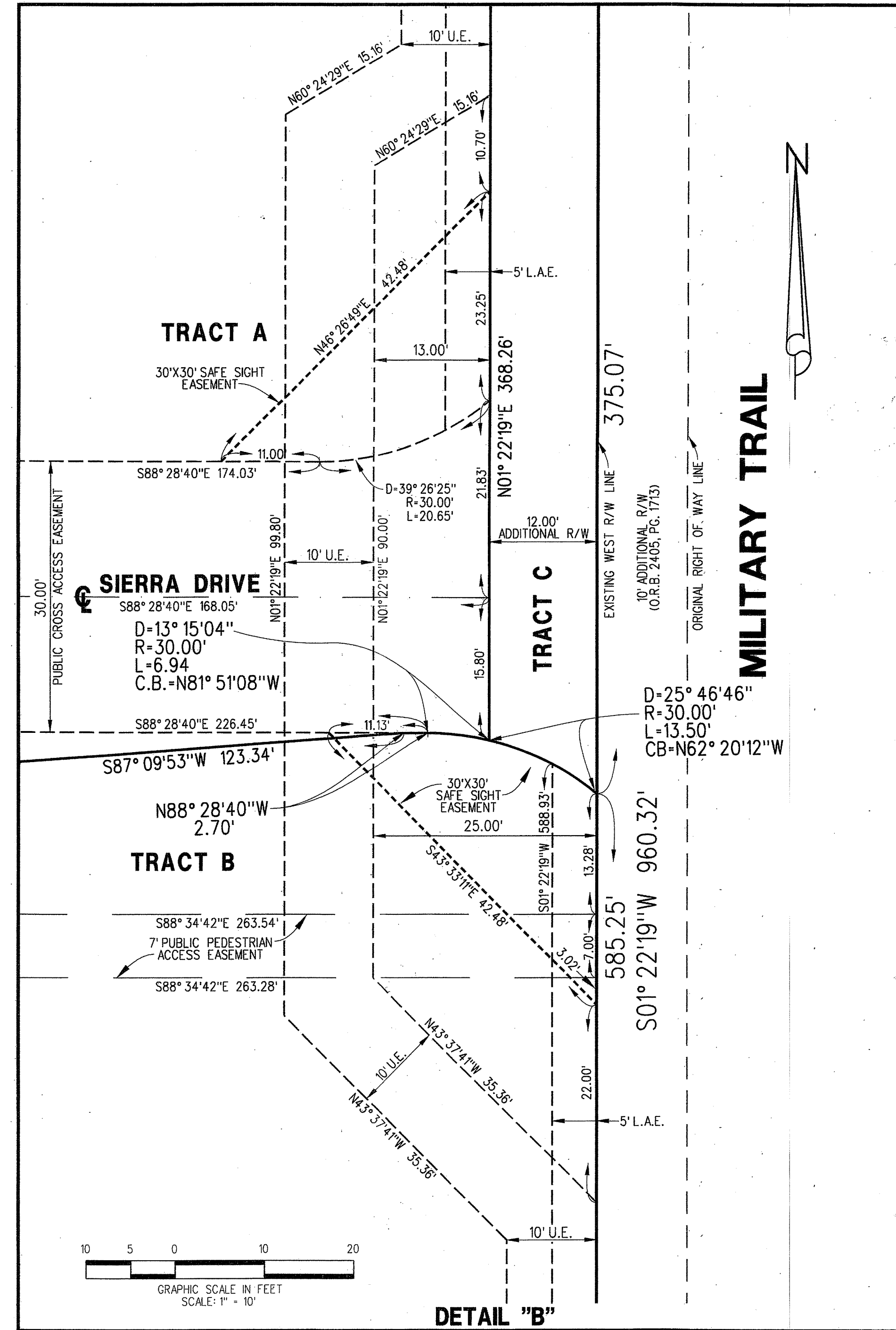
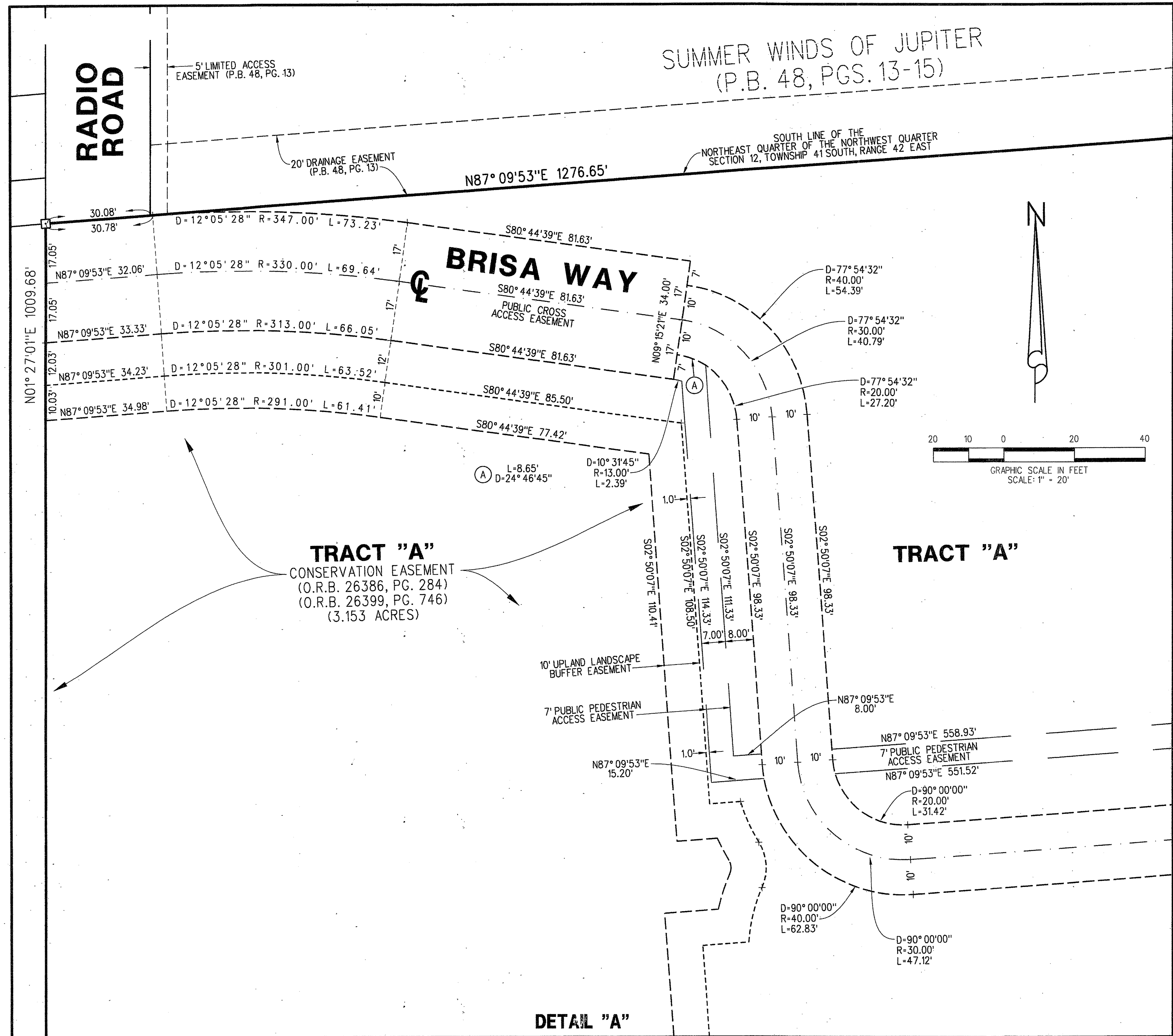


BARCELONA

BEING A PORTION OF SECTION 12, TOWNSHIP 41 SOUTH, RANGE 42 EAST,
TOWN OF JUPITER, PALM BEACH COUNTY, FLORIDA
SEPTEMBER 2013 SHEET 3 OF 3



ABBREVIATIONS:

CB	= CHORD BEARING
CL	= CENTERLINE
CL	= CHORD LENGTH
CONC.	= CONCRETE
COR.	= CORNER
D	= DELTA
D.E.	= DRAINAGE EASEMENT
L	= ARC LENGTH
O.R.B.	= OFFICIAL RECORD BOOK
MON.	= MONUMENT
P.A.E.	= PUBLIC ACCESS EASEMENT
P.C.P.	= PERMANENT CONTROL POINT
P.B.	= PLAT BOOK
PG.	= PAGE
PGS.	= PAGES
P.O.B.	= POINT OF BEGINNING
P.R.M.	= PERMANENT REFERENCE MONUMENT
P.S.M.	= PROFESSIONAL SURVEYOR AND MAPPER
P.S.E.	= PUBLIC SIDEWALK EASEMENT
R	= RADIUS
SEC.	= SECTION
U.E.	= UTILITY EASEMENT

LIDBERG LAND SURVEYING, INC.

675 West Indiantown Road, Suite 200, Jupiter, Florida 33458 TEL. 561-746-8454

CAD.	K:\JUST \ 124142 \ 11-077 \ 11-077-306 \ 11-077-306.DGN		
REF.			
FLD.	FB.	PG.	JOB 11-077-306
OFF.	CASASUS		DATE SEPTEMBER 2013
CKD.	D.C.L.	SHEET 3 OF 3	DWG. DT-077P